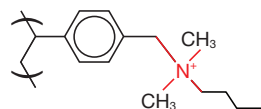


Strata[™]-XL-A General Method for the Extraction of Weak Acids

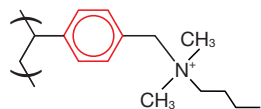
Strata-XL-A is a novel polymeric, large particle, strong anion exchange sorbent that couples a hydrophobic backbone with a dimethyl butyl quaternary amine functional group.

This sorbent retains analytes by several different mechanisms:

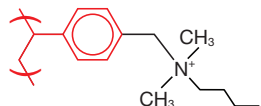
Strong Anion Exchange



π - π Bonding



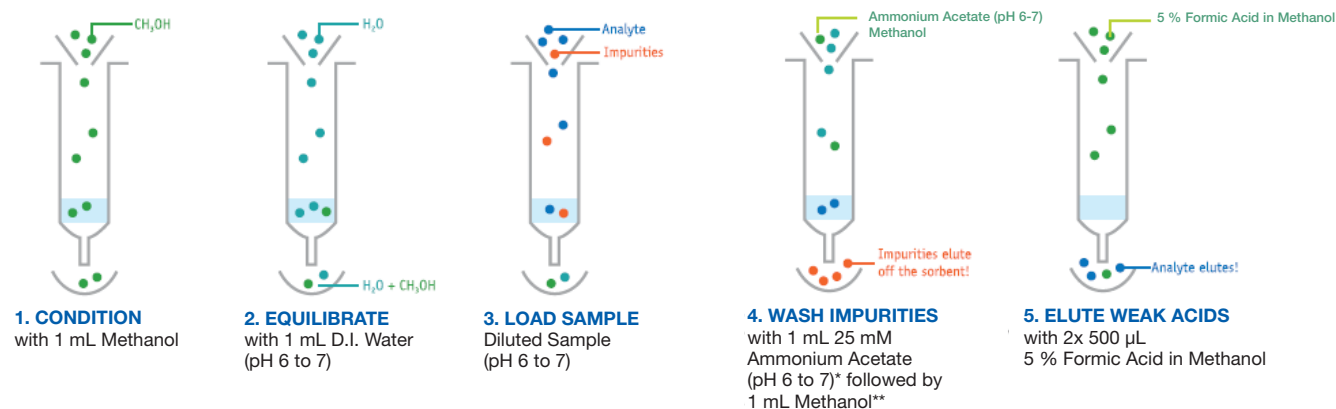
Hydrophobic Interaction



Strata-XL-A Method for Acidic Compounds

Note: Method uses solvent volumes appropriate for a 30 mg sorbent mass. For larger or smaller masses, refer to Phenomenex Technical Note TN-013.

Very Important: This method is NOT suitable for the extraction of strongly acidic (anionic) compounds such as sulfonic acids. For such compounds, please follow the method entitled "Strata-XL-AW General Method for the Extraction of Any Acid" (Technical Note TN-0030), which uses a weak anion exchange sorbent.



*This fraction will contain polar neutrals.

**The methanol wash serves to remove endogenous contaminants from biological sample matrices and reduces ion suppression in LC/MS under ESI mode. This fraction will contain neutrals and bases.

TN-0038

GENERAL METHODS

Australia

t: 02-9428-6444
f: 02-9428-6445
auinfo@phenomenex.com

Austria

t: 01-319-1301
f: 01-319-1300
anfrage@phenomenex.com

Belgium

t: +31 (0)30-2418700
f: +31 (0)30-2383749
beinfo@phenomenex.com

Canada

t: (800) 543-3681
f: (310) 328-7768
info@phenomenex.com

Denmark

t: 4824 8048
f: 4810 6265
nordicinfo@phenomenex.com

Finland

t: (09)4789 0063
f: +45 4810 6265
nordicinfo@phenomenex.com

France

t: 01 30 09 21 10
f: 01 30 09 21 11
franceinfo@phenomenex.com

Germany

t: 06021-58830-0
f: 06021-58830-11
anfrage@phenomenex.com

Ireland

t: 01 247 5405
f: +44 1625-501796
eireinfo@phenomenex.com

Italy

t: 051 6327511
f: 051 6327555
italiainfo@phenomenex.com

Luxembourg

t: +31 (0)30-2418700
f: +31 (0)30-2383749
nlinfo@phenomenex.com

Mexico

t: (55) 5018 3791
f: (310) 328-7768
tecnicomx@phenomenex.com

The Netherlands

t: 030-2418700
f: 030-2383749
nlinfo@phenomenex.com

New Zealand

t: 09-4780951
f: 09-4780952
nzinfo@phenomenex.com

Norway

t: 81 00 20 05
f: +45 4810 6265
nordicinfo@phenomenex.com

Puerto Rico

t: (800) 541-HPLC
f: (310) 328-7768
info@phenomenex.com

United Kingdom

t: 01625-501367
f: 01625-501796
ukinfo@phenomenex.com

All other countries: Corporate Office USA



t: (310) 212-0555
f: (310) 328-7768
info@phenomenex.com

www.phenomenex.com

Phenomenex products are available worldwide. For the distributor in your country, contact Phenomenex USA, International Department at international@phenomenex.com

Strata™ -XL-A Ordering Information

Sorbent Mass	Part No.	Unit
Tube		
30 mg	8B-S053-TAK	1 mL (100/box)
60 mg	8B-S053-UBJ	3 mL (50/box)
100 mg	8B-S053-EBJ	3 mL (50/box)
100 mg	8B-S053-ECH	6 mL (30/box)
200 mg	8B-S053-FBJ	3 mL (50/box)
200 mg	8B-S053-FCH	6 mL (30/box)
500 mg	8B-S053-HBJ	3 mL (50/box)
500 mg	8B-S053-HCH	6 mL (30/box)
Giga™ Tube		
2 g	8B-S053-KDG	12 mL (20/box)
2 g	8B-S053-KEG	20 mL (20/box)
5 g	8B-S053-LEG	20 mL (20/box)
5 g	8B-S053-LFF	60 mL (16/box)
10 g	8B-S053-MFF	60 mL (16/box)
96-Well Plate		
30 mg	8E-S053-TGB	2 Plates/Box

Contact your Phenomenex Sample Preparation Specialist for additional sizes available, applications, method development support, and free samples of Strata™-X SPE tubes!



If Strata® SPE products do not perform as well or better than your current SPE product of similar phase, mass and size, return the product with comparative data within 45 days for a FULL REFUND.

Terms and Conditions

Subject to Phenomenex Standard Terms and Conditions which may be viewed at <http://www.phenomenex.com/TermsAndConditions>.

Trademarks

Strata is a registered trademark of Phenomenex, Inc. Strata-X and Giga are trademarks of Phenomenex, Inc.

Disclaimer

The general method is a convenient starting point for SPE method development. Further optimization may be required to tailor the method to your specific needs.

Strata-X is patented by Phenomenex.

© 2010 Phenomenex, Inc. All rights reserved.