

Increased Sensitivity, Improved Resolution and Faster Analysis Times For Compensial Methods: Determination of Impurities and Related Substances Using Newly Developed 2.6 μm Core-Shell Kinetex™ LC Columns

Ellie Abbasi, Jeff Layne, Heiko Behr, and Sky Countryman
Phenomenex, Inc. 411 Madrid Avenue, Torrance, CA 90501, USA

- Methods can be improved for ultra-high performance without the need for higher-pressure capable instrumentation.
- Within allowable modifications for system suitability, methods can be improved for better resolution, higher sensitivity, and significantly faster analysis time.

Introduction

Presently, HPLC methods for the determination of impurities and related substances of drug products specified in monographs by the various Pharmacopoeial agencies typically employ LC columns packed with fully-porous 3 and 5 μm spherical silica chromatographic media. Due to the performance limitations of fully-porous 3 and 5 μm spherical silica chromatographic media, these analytical methods commonly require long analysis times. Additionally, accurate quantitation of low-level impurities in routine LC-UV applications may be challenging due to the low intensity peaks generated by these columns.

In recent years, smaller fully-porous LC particles (sub-2 μm diameter) have been introduced that offer faster analysis times and generate higher intensity peaks for better sensitivity. Unfortunately, widespread adoption of this sub-2 μm HPLC column technology has been slowed since the smaller particle columns generate system backpressures that require specialized ultra-high pressure capable LC instrumentation.

Recently, a newly developed Kinetex™ 2.6 μm core-shell chromatographic particle has been commercialized that offers the performance benefits of sub-2 μm fully-porous particles but at substantially lower operating pressures. To demonstrate the performance benefits of this new core-shell technology, a Kinetex™ 2.6 μm core-shell C18 column was compared with a fully-porous 5 μm C18 column referenced in EP ([Ph. Eur.] European Pharmacopoeia) Monograph 0703 for Atenolol and related substances on a conventional HPLC instrument with an upper pressure limit of 400 bar.

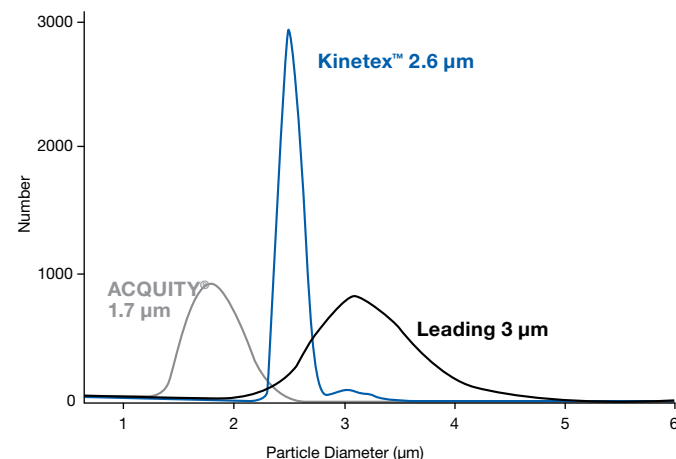
First, to demonstrate equivalency, a Kinetex™ column of similar dimension to the column referenced was operated under the conditions specified in the monograph. Then the Kinetex™ column was operated at a higher flow rate still within the $\pm 50\%$ adjustment allowed by the EP for meeting system suitability. The Kinetex™ column achieved a 65% faster analysis time (3x productivity improvement) and significantly improved resolution and sensitivity versus the EP referenced fully-porous 5 μm column.

Overview of Kinetex™ 2.6 μm Core-Shell Technology

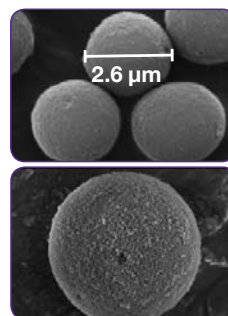
Precision Core-Shell Manufacturing

The Kinetex™ technology is comprised of a nearly monodispersed 1.9 μm solid silica core and a 0.35 μm porous silica shell. This particle design results in a very stable and homogeneous packed column bed that significantly reduces peak dispersion due to eddy diffusion (the “A” term of the van Deemter equation). Additionally, the short diffusion path of the 0.35 μm porous silica shell allows for faster kinetics of diffusion, thereby minimizing peak dispersion due to resistance to mass transfer (the “C” term in the van Deemter equation) (**Figure 1 & 2**).

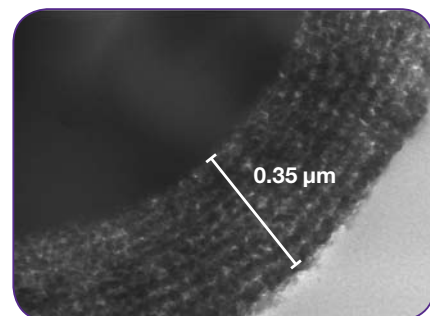
Figure 1.
Uniform Particle Size Distribution



Final Kinetex™ 2.6 μm Particle with 0.35 μm Porous Shell



Cross-section image of Kinetex™ 2.6 μm Core-Shell Particle



TN-1069

APPLICATIONS

Ultra-High Efficiency Particle

Columns packed with Kinetex™ 2.6 µm core-shell silica particles are capable of maintaining ultra-high efficiencies across an extended range of mobile phase linear velocity. In **Figure 2**, van Deemter plots of plate height versus mobile phase linear velocity are presented for the Kinetex™ 2.6 µm column and a leading sub-2 µm column. Data was generated on an Agilent 1200SL instrument with an upper pressure limit of 600 bar. Note that the Kinetex™ 2.6 µm column achieved plate heights equivalent to the sub-2 µm column and was able to be operated at a higher flow rate before the upper system pressure limit was reached. Also note that there is not a significant increase in plate height as mobile phase velocity is increased. This is due to the very low resistance to mass transfer of analytes into and out of the porous shell containing the stationary phase that surrounds the solid silica core (minimizing the contribution of the “C” term to plate height).

Reasonable LC System Operating Pressures

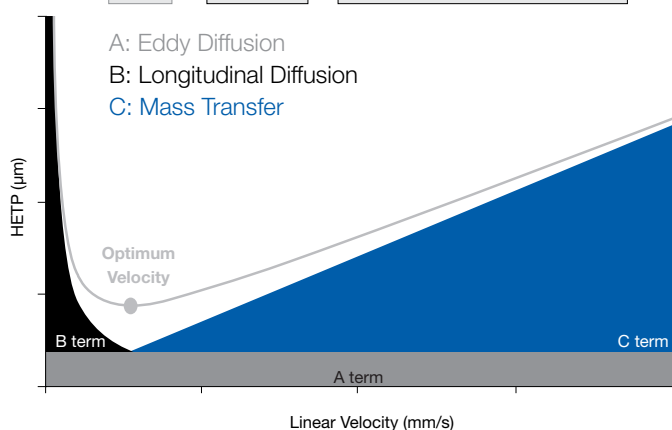
The comparison results in **Figure 3** demonstrate the ability of the Kinetex™ 2.6 µm core-shell technology to achieve chromatographic efficiencies comparable to those of fully-porous sub-2 µm columns at substantially lower system backpressures. The lower pressures generated by columns packed with Kinetex™ 2.6 µm particles allow them to be used on conventional LC instruments for routine analysis under 400 bar whereas traditional fully-porous sub-2 µm particles have limited utility below 400 bar and therefore require specialized ultra-high pressure capable LC instrumentation. This capability eliminates the challenges associated with the transfer of ultra-high performance methods across various LC system platforms, and makes ultra-high performance LC accessible to more scientists and laboratories.

Figure 2.

van Deemter Equation

$$H = 2\lambda d_p + 2GD_m/\mu + w(d_e)^2\mu/D_m + Rd_e^2\mu/D_s *$$

- A: Eddy Diffusion
- B: Longitudinal Diffusion
- C: Mass Transfer



* d_e refers to the effective particle size. For Kinetex™ 1.7 µm particles, $d_e = 1.5 \mu\text{m}$ and for Kinetex™ 2.6 µm particles, $d_e = 1.7 \mu\text{m}$. For fully porous particles, $d_e = d_p$.

van Deemter Data

Agilent 1200 SL - 50 x 2.1 mm columns

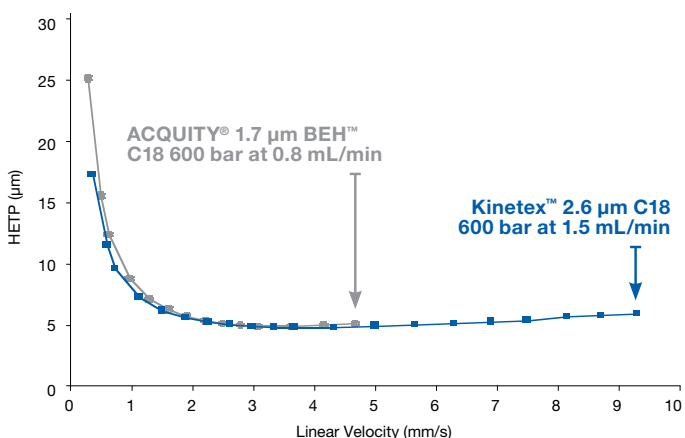
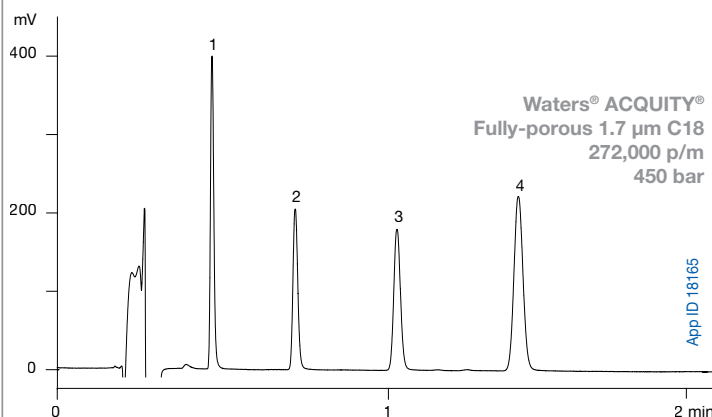
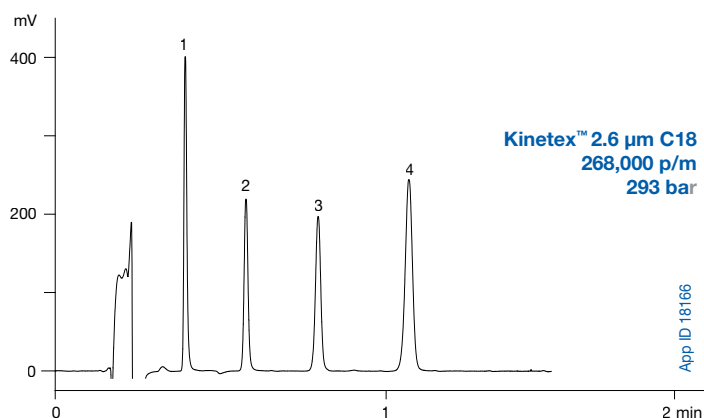


Figure 3.



Conditions for both columns:

Dimensions: 50 x 2.1 mm

Mobile Phase: Acetonitrile / Water (50:50)

Flow Rate: 0.6 mL/min

Temperature: 25 °C

Detection: UV @ 254 nm

Instrument: Waters® ACQUITY® UPLC®

Sample: 1. Acetophenone
2. Benzene
3. Toluene
4. Naphthalene

TN-1069

APPLICATIONS

Experimental

Atenolol and Related Substances: European Monograph 0703

Columns Used:

A fully-porous 5 µm C18 125 x 4.0 mm column (as specified by the monograph) was compared with a Kinetex™ 2.6 µm C18 100 x 4.6 mm column (The closest available dimension).

Instrumentation:

Agilent 1100 LC System (Agilent Technologies Inc., Palo Alto, CA, USA) equipped with a Quaternary gradient pump, autosampler, column oven, and variable wavelength detector.

Mobile Phase Preparation:

- A:** Dissolve 3.4 g of Potassium Dihydrogen Phosphate in 1 L of DI water, adjust the pH to 3.0 using Phosphoric acid.
- B:** Mix 180 mL of Methanol and 20 mL of Tetrahydrofuran and 800 mL of A.
- C:** Dissolve 1.0 g of Sodium Octanesulphonate and 0.4 g of Tetrabutyl Ammonium Hydrogen Sulphate in 1 L of B.

Sample Preparation:

Atenolol Certified Reference Standard (CRS) for system suitability (containing atenolol and impurities B, F, G, I and J) was obtained from the European Pharmacopoeia. 5 mg of Atenolol CRS was dissolved in 2.5 mL of the mobile phase.

Atenolol Analysis Method:

The monograph calls for isocratic elution with 100 % of mobile phase as prepared above at 0.6 mL/min. Column temperature kept at ambient and UV detection wavelength set at 226 nm.

Results and Discussion

Following the methodology described in *European Pharmacopoeia*, Monograph 0703 and using a fully-porous 5 µm C18 125 x 4.0 mm column as referenced in the method, a chromatogram similar to that of the specimen chromatogram provided with the Atenolol CRS was obtained (**Figure 4**).

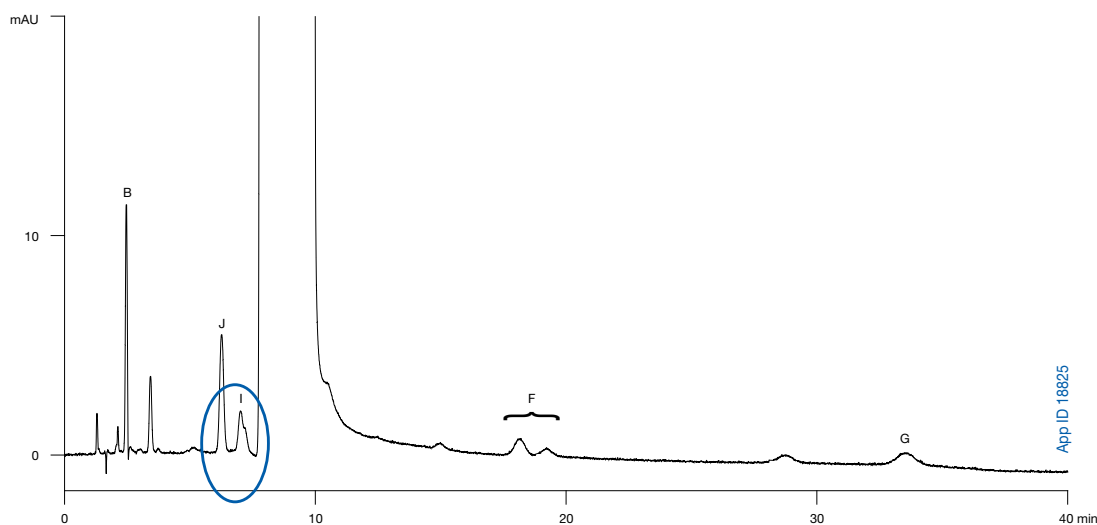
A Kinetex™ 2.6 µm C18 100 x 4.6 mm column (the closest available dimension) was used according to the conditions specified in the monograph. The resulting chromatogram demonstrated equivalency for selectivity and also demonstrated significantly improved sensitivity (**Figure 5**).

Table 1 summarizes the data comparing the Kinetex™ column to the fully-porous 5 µm column at the specified flow rate of 0.6 mL/min. The monograph requires resolution between impurities I and J of at least 1.4. Due to the significantly narrower peaks generated by the higher efficiency Kinetex™ column, a substantial improvement in resolution between impurities I and J was achieved.

Sensitivity was also significantly improved for all impurities as a result of the Kinetex™ column generating narrower and taller peaks. Signal-to-noise ratios for the early eluting impurities were increased by roughly a factor of 2 and by roughly a factor of 3 for later eluting impurities.

With 10 µL of the Atenolol CRS injected, the fully-porous 5 µm C18 column generated a signal-to-noise ratio of 12.3 for impurity I. Multiple 10 µL injections were performed on the fully-porous 5 µm C18 column and the resulting %RSD value for peak area of impurity I was 2.77.

Figure 4.
Atenolol CRS: Fully-porous 5 µm C18
125 x 4.0 mm at 10 µL injection 0.6 mL/min



TN-1069

APPLICATIONS

In comparison, with 10 μ L of the Atenolol CRS sample injected on the Kinetex™ 2.6 μ m core-shell C18 column, a signal-to-noise ratio of 28.9 was observed for impurity I. Multiple 10 μ L injections were performed on the Kinetex™ column and the resulting %RSD value for peak area of impurity I was 1.61.

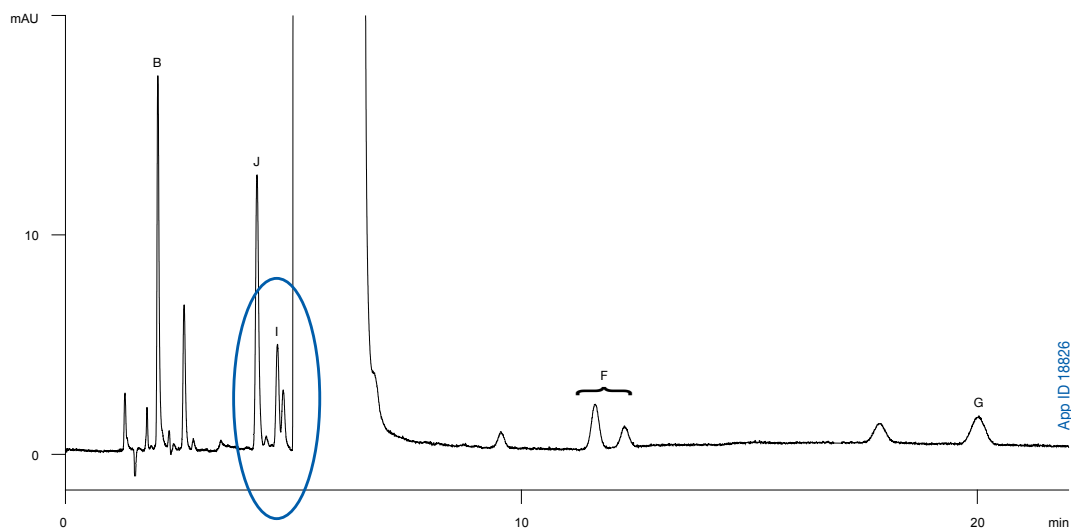
Considering that LOQ (defined by the European Pharmacopoeia as corresponding to a signal-to-noise ratio of 10 for a peak) can be one of the most challenging parameters to meet in routine operation, the higher signal-to-noise ratios and subsequently lower %RSD values observed with the Kinetex™ core-shell technology represent a significant performance advantage.

It should be noted that the Kinetex™ column generated a system pressure comparable to the 5 μ m column under these conditions.

Table 1. Equivalency Study

	Fully-porous 5 μ m	Kinetex™ 2.6 μ m C18
Column Dimensions	125 x 4.0 mm	100 x 4.6 mm
Particle Size	5 μ m fully porous	2.6 μ m core-shell
Flow Rate	0.6 mL/min	0.6 mL/min
Backpressure	168 bar	180 bar
Resolution of Impurities J & I	1.95	2.26
S/N ratio for Impurity J	40	82.7
S/N ratio for Impurity I	12.3 (%RSD 2.77)	28.9 (%RSD 1.61)
S/N ratio for Impurity G	3.31	8.67
N of Impurity J	8,206	20,372
Elution time of last peak	33.3 min	20.0 min

Figure 5.
Atenolol CRS: Kinetex™ 2.6 μ m C18
100 x 4.6 mm at 10 μ L injection 0.6 mL/min



TN-1069

APPLICATIONS

Significantly Faster Analysis Times with Kinetex™ Columns
As demonstrated in **Figure 2**, columns packed with Kinetex™ 2.6 µm core-shell particles are capable of maintaining high efficiencies (low plate heights) with increasing mobile phase flow rates. This is due to favorable physical, kinetic, and thermodynamic properties attributed to core-shell particles. Shorter analysis times may be achieved with Kinetex™ columns either by reducing the length of the column or increasing the mobile phase flow rate (or a combination of both) without significantly compromising chromatographic performance.

Following European Pharmacopoeia guidelines, the extent to which the various parameters of a chromatographic test may be adjusted to satisfy system suitability (when replacing one column

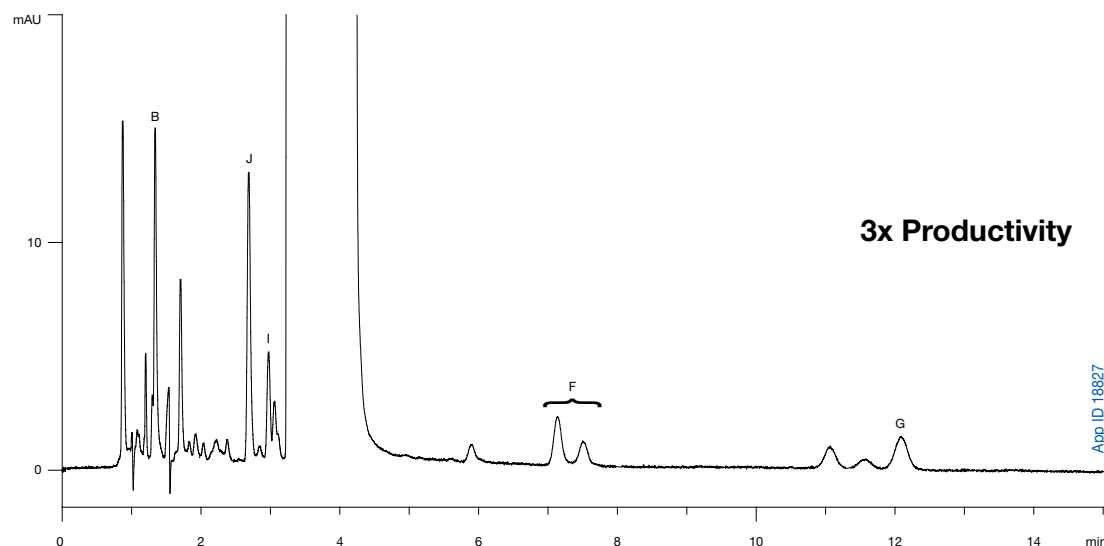
with another of the same type, for example) is summarized in **Table 2**. Staying within these guidelines, the Kinetex™ 2.6 µm core-shell C18 column was run according to the conditions specified in the monograph, but with 50 % increase in the flow rate (from 0.6 mL/min to 0.9 mL/min).

With a flow rate of 0.9 mL/min, the total analysis time was shortened from over 33 minutes to just under 12 minutes (**Figure 6**). Resolution, efficiency and sensitivity remained substantially higher with the Kinetex™ column at the higher flow rate (**Table 3**). The reduction in analysis time achieved with the Kinetex™ column in this example represents roughly a 3-fold increase in sample throughput capability.

Table 2.
Acceptable Modifications for Meeting System Suitability

Method Parameter	Acceptable Modification	Monograph 0703 Atenolol	Kinetex™ 2.6 µm Fast Method	Modification
Mobile phase pH	± 0.2 units	3	No Change	--
Concentration of salts in buffer	± 10 %	as specified	No Change	--
Ratio of components in mobile phase	± 30 % relative of the minor component(s), or 2% absolute of that component, whichever is greater, but a change in any component cannot exceed ± 10 % absolute.	as specified	No Change	--
Wavelength of UV-Detector	no deviations permitted	226 nm	No Change	--
Injection volume	May be decreased, provided detection and repeatability of the peak(s) to be determined are satisfactory.	10 µL	No Change	--
Column temperature	± 10 %, to a maximum of 60 °C	ambient	No Change	--
Column length	± 70 %	125 mm	100 mm	- 20 %
Column inner diameter	± 25 %	4.0 mm	4.6 mm	+ 15 %
Particle size	- 50 %	5 µm	2.6 µm	- 48 %
Flow rate	± 50 %	0.6 mL/min	0.9 mL/min	+ 50 %

Figure 6.
Atenolol CRS: Kinetex™ 2.6 µm C18
100 x 4.6 mm at 10 µL injection 0.9 mL/min



TN-1069

APPLICATIONS

Operating outside of the allowed adjustments and using a flow rate of 1.3 mL/min on the Kinetex™ 2.6 µm C18 100 x 4.6 mm column resulted in an analysis time of 8 minutes with substantially higher resolution, efficiency and sensitivity as compared to the fully-porous 5 µm 125 x 4.0 mm column (**Figure 7**). This represents a 4-fold increase in throughput capability for this analysis. Note that

this performance was achieved using an Agilent 1100 LC system with an upper pressure capability of 400 bar.

A flow rate of 1.3 mL/min generated a system pressure of 380 bar. Further optimization would be possible with a shorter Kinetex™ column.

Figure 7.
Atenolol CRS: Kinetex™ 2.6 µm C18
100 x 4.6 mm at 10 µL injection 1.3 mL/min

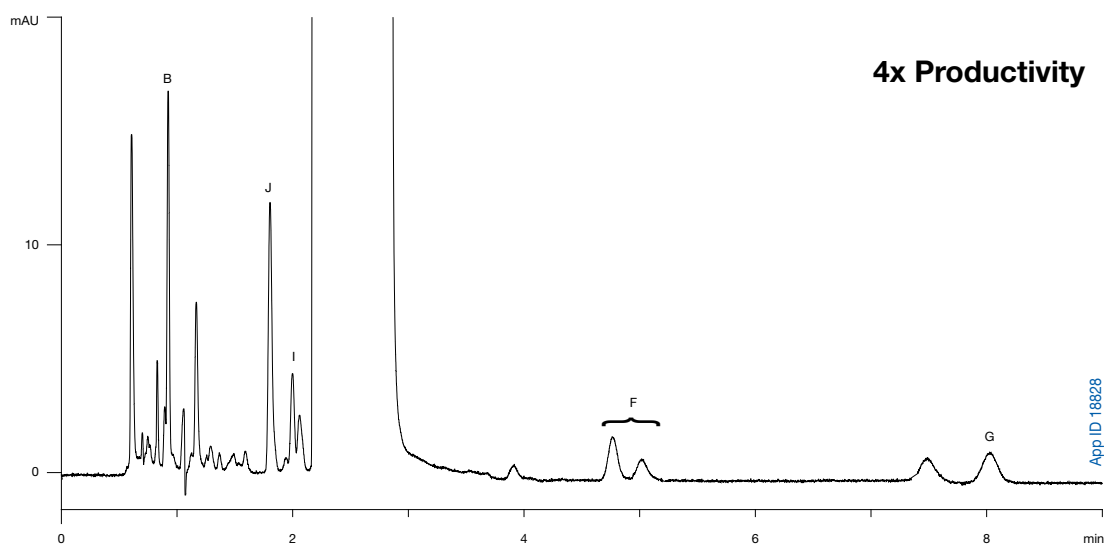


Table 3.
Improvements To The Monograph

	Fully-porous 5 µm	Kinetex™ 2.6 µm C18 0.9 mL/min	Kinetex™ 2.6 µm C18 1.3 mL/min
Column Dimensions	125 x 4.0 mm	100 x 4.6 mm	100 x 4.6 mm
Particle Size	5 µm fully porous	2.6 µm core-shell	2.6 µm core-shell
Flow Rate	0.6 mL/min	0.9 mL/min	1.3 mL/min
Backpressure	168 bar	270 bar	380 bar
Resolution of Impurities J & I	1.95	3.72	3.65
S/N ratio for Impurity J	40	78.1	78.7
S/N ratio for Impurity I	12.3	30.2	28.7
S/N ratio for Impurity G	3.31	9.38	9.33
N of Impurity J	8,206	21,118	19,473
Elution time of last peak	33.3 min	11.9 min	8.0 min

Conclusions

Newly developed Kinetex™ 2.6 µm core-shell particles are capable of achieving chromatographic performance equivalent to columns packed with traditional fully-porous sub-2 µm particles at substantially lower operating pressures that are compatible with conventional HPLC instrumentation.

Laboratories performing routine API and related substance analysis with traditional fully-porous LC columns can benefit from the increased speed, resolution and sensitivity that Kinetex™ 2.6 µm columns provide without having to replace existing instrumentation with ultra-high pressure capable LC systems. Faster analysis

times resulting in higher throughput and productivity can be achieved with Kinetex™ columns with minimal changes to validated methods by employing shorter length columns and/or higher mobile phase flow rates without sacrificing performance. Improved resolutions and higher sensitivity resulting from narrower and taller chromatographic peaks generated by Kinetex™ columns allow for more precise detection and quantitation of low level impurities in routine operation.

Reference

- 2.2.46 Chromatographic Separation Techniques, European Pharmacopeia 6.0

TN-1069

APPLICATIONS

Kinetex™ Ordering Information

Part No.	Description	Dimensions	Unit
00B-4475-AN	Kinetex 1.7 µm C18	50 x 2.1 mm	ea
00D-4475-AN	Kinetex 1.7 µm C18	100 x 2.1 mm	ea
00F-4475-AN	Kinetex 1.7 µm C18	150 x 2.1 mm	ea
00B-4462-AN	Kinetex 2.6 µm C18	50 x 2.1 mm	ea
00D-4462-AN	Kinetex 2.6 µm C18	100 x 2.1 mm	ea
00F-4462-AN	Kinetex 2.6 µm C18	150 x 2.1 mm	ea
00B-4462-Y0	Kinetex 2.6 µm C18	50 x 3.0 mm	ea
00D-4462-Y0	Kinetex 2.6 µm C18	100 x 3.0 mm	ea
00F-4462-Y0	Kinetex 2.6 µm C18	150 x 3.0 mm	ea
00B-4462-E0	Kinetex 2.6 µm C18	50 x 4.6 mm	ea
00D-4462-E0	Kinetex 2.6 µm C18	100 x 4.6 mm	ea
00F-4462-E0	Kinetex 2.6 µm C18	150 x 4.6 mm	ea

Other phases available, contact your Phenomenex technical consultant.

KrudKatcher™ Ultra In-Line Filter Ordering Information

Part No.	Description	Unit
AF0-8497	KrudKatcher Ultra In-Line Filter, 0.5 µm Porosity x 0.004 in. ID	3/pk

Installation wrench not provided. KrudKatcher Ultra requires 5/16 in. wrench.

UHPLC / HPLC Sure-Lok™ High Pressure PEEK® Male Nut Fittings

Made of a proprietary PEEK® blend. The convenient one-piece design is pressure rated to 12,000 psi (827 bar) and stable up to temperatures of 200 °C.



Ordering Information

Part No.	Description	Unit
AQ0-8503	Sure-Lok Fingertight PEEK 1-Pc Nut, 10-32, for 1/16 in. Tubing, 12,000 psi (827 bar)*	10/pk

* Sure-Lok Fitting Tightening Tool (AQ0-8530) is required for AQ0-8503.

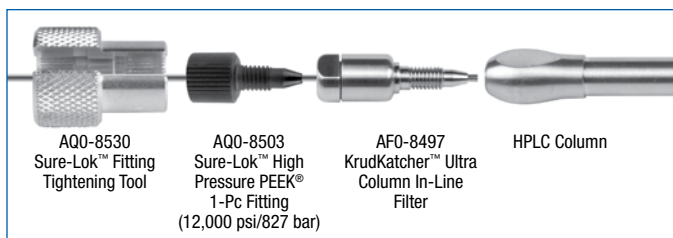
High Pressure Fitting Tool

Use this handy tool to tighten any standard, short- or long-style knurl-headed (high pressure) male nut like the ones shown. The tool can also be used with many of the low-pressure nuts commonly used in the lab.



DIRECTIONS:

A wrench is used on the column to secure its movement, while the aluminum Sure-Lok™ Fitting Tightening Tool (AQ0-8530) is applied over connective tubing, onto Sure-Lok™ fitting, and hand-tightened for high pressure use.



Ordering Information

Part No.	Description	Unit
AQ0-8530	Sure-Lok Fitting Tightening Tool, Aluminum	ea

Ultra-High Performance Stainless Steel Nut and Ferrule Set

For ultra-high pressure connections use this specially-designed 10-32 stainless steel nut and ferrule set. The metal ferrule cuts a ring near the end of the tube to swage the fitting to the tube, and will provide a maximum operational limit of 28,000 psi (1,930 bar). Seating (swaging) the fitting usually takes only about a 1/4 turn beyond the point where the ferrule first starts to grab the tubing.



Important: To achieve the maximum pressure rating, 45 lbs of torque is required.

Ordering Information

Part No.	Description	Unit
AQ0-8506	Nut and Ferrule Set, SS, 10-32, for 1/16 in. Tubing, 28,000 psi (1,930 bar)	10/pk



If Kinetex™ analytical columns do not provide at least an equivalent separation as compared to a competing column of the same phase and dimensions, return the column with comparative data within 45 days for a FULL REFUND.

TN-1069 APPLICATIONS

Australia

t: 02-9428-6444
f: 02-9428-6445
auinfo@phenomenex.com

Austria

t: 01-319-1301
f: 01-319-1300
anfrage@phenomenex.com

Belgium

t: +31 (0)30-2418700
f: +31 (0)30-2383749
beinfo@phenomenex.com

Canada

t: (800) 543-3681
f: (310) 328-7768
info@phenomenex.com

Denmark

t: 4824 8048
f: 4810 6265
nordicinfo@phenomenex.com

Finland

t: 09-4789 0063
f: +45 4810 6265
nordicinfo@phenomenex.com

France

t: 01 30 09 21 10
f: 01 30 09 21 11
franceinfo@phenomenex.com

Germany

t: 06021-58830-0
f: 06021-58830-11
anfrage@phenomenex.com

Ireland

t: 01 247 5405
f: +44 1625-501796
eireinfo@phenomenex.com

Italy

t: 051 6327511
f: 051 6327555
italiainfo@phenomenex.com

Luxembourg

t: +31 (0)30-2418700
f: +31 (0)30-2383749
nlinfo@phenomenex.com

Mexico

t: (55) 5018 3791
f: (310) 328-7768
tecnicomx@phenomenex.com

Netherlands

t: 030-2418700
f: 030-2383749
nlinfo@phenomenex.com

New Zealand

t: 09-4780951
f: 09-4780952
nzinfo@phenomenex.com

Norway

t: 81 00 20 05
f: +45 4810 6265
nordicinfo@phenomenex.com

Puerto Rico

t: (800) 541-HPLC
f: (310) 328-7768
info@phenomenex.com

United Kingdom

t: 01625-501367
f: 01625-501796
ukinfo@phenomenex.com

All other countries: **Corporate Office USA**

t: (310) 212-0555
f: (310) 328-7768
info@phenomenex.com

www.phenomenex.com

Phenomenex products are available worldwide. For the distributor in your country, contact Phenomenex USA, International Department at international@phenomenex.com

Terms and Conditions

Subject to Phenomenex Standard Terms & Conditions, which may be viewed at www.phenomenex.com/TermsAndConditions

Trademarks

Kinetex, Sure-Lok, and KrudKatcher are trademarks of Phenomenex, Inc. Waters, ACQUITY, and UPLC are registered trademarks of Waters Corporation. PEEK is a registered trademark of ICI Americas.

Disclaimer

Comparative separations may not be representative of all applications. Phenomenex is not affiliated with Waters Corporation, Agilent Technologies, and ICI Americas.

© 2010 Phenomenex, Inc. All rights reserved.